

RII30920 CERTIFICATE III IN CIVIL CONSTRUCTION

CIVIL CONSTRUCTION GENERAL



MTACS
MINING TRANSPORT AND CONSTRUCTION SERVICES
RTO 52053



**SKILLS
READY**
Boost your skills for the future

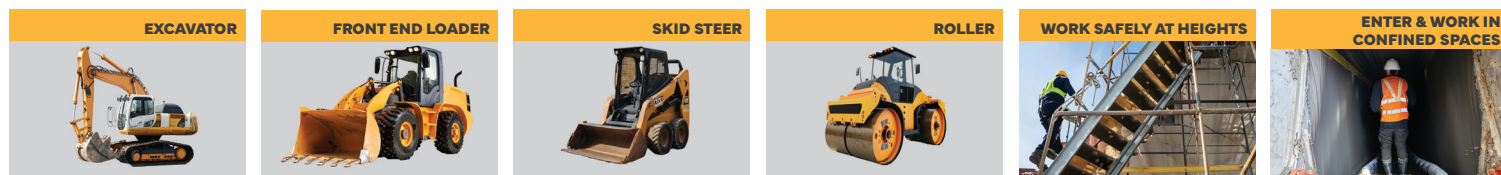
**LOWER FEES
LOCAL SKILLS**



POTENTIAL CAREER OPPORTUNITIES

- Construction Worker
- Mining Plant Operator
- Earth Moving Plant Operator
- Quarry Worker

This qualification reflects the role of individuals working as skilled operators with civil construction plant, applying a broad range of skills in varied work contexts, using discretion and judgment, along with relevant theoretical knowledge. These individuals may also provide theoretical advice and support a team. Upon successful completion of this qualification, students will gain competencies in operating the civil construction plants listed below.



COURSE INFORMATION

A full-time, comprehensive training program that combines face-to-face training in a simulated construction environment over a duration of 13 weeks (65 days), Monday to Friday from 8:30 AM to 4:30 PM. Regular attendance is mandatory. For students requiring extra assistance, up to 12 months is allowed to complete the course. These students will have access to ad-hoc support sessions organised with the trainer to help them progress.

TRAINING LOCATIONS

Flexible location options available, with the course offered in various locations throughout Perth and its regional areas.

ENROLMENT ENQUIRIES

☎ **1300 436 756**

✉ enquiries@mtacs.com.au

GOT QUESTIONS?

Reach out! Our friendly team is ready to help you navigate your options and get started.

JOIN US TODAY AND FIND YOUR PLACE HERE



**TRAINING ALLIANCE
GROUP**
QUALITY EDUCATION & MEANINGFUL EMPLOYMENT

Mining Transport and Construction Services (MTACS) is the Registered Training Organisation (RTO Number: 52053) students will be enrolling with. MTACS has third party arrangements with Training Alliance Group to provide services (marketing, students recruitment, training and assessment, issuing qualifications, educational and other support services) on behalf of MTACS under MTACS name. MTACS is responsible for all the actions of the Training Alliance Group under third party arrangements. MTACS is fully owned by Training Alliance Group.

Units within this Qualification:

Core Units

RIIBEF201E	Plan and organise work
RIICCM201E	Carry out measurements and calculations
RIICCM203E	Read and interpret plans and job specifications
RIICOM201E	Communicate in the workplace
RIIRIS301E	Apply risk management processes
RIISAM203E	Use hand and power tools
RIISAM204E	Operate small plant and equipment
RIIWS201E	Work safely and follow WHS policies and procedures

Elective Units

RIICCM202E	Identify, locate and protect underground services
RIIHAN308F	Load and unload plant
RIIMPO320F	Conduct civil construction excavator operations
RIIWMG203E	Drain and dewater civil construction sites
BSBOPS304	Deliver and monitor a service to customers

RIICCM205F	Carry out manual excavation
RIICCM206E	Support plant operations
RIICCM207E	Spread and compact materials manually
RIICCM208E	Carry out basic levelling
RIIMPO318F	Conduct civil construction skid steer loader operations
RIIMPO334E	Conduct skid steer loader operations using attachments
RIIRIS201E	Conduct local risk control
RIIWS202E	Enter and work in confined spaces
RIIWS204E	Work safely at heights
RIIQUA201E	Maintain and monitor site quality standards
RIIMPO317F	Conduct roller operations
RIIMPO321F	Conduct civil construction wheeled front end loader operations

Packaging rules for this qualification require the completion of 25 units of which 8 are core units (unable to be changed), and 17 are elective units (can be selected from a predetermined list by the training provider)

Enrolment Information:

Students are required to read the Student Handbook and agree to the Terms and Conditions prior to enrolment. All students must satisfactorily complete a Language, Literacy, and Numeracy (LLN) assessment at a minimum of ACSF Level 2 and participate in a course suitability discussion during the pre-enrolment process. Once the enrolment is reviewed, students will receive confirmation of their enrolment. A valid Unique Student Identifier (USI) is mandatory for all students.

Certification:

Upon successful completion, student will receive:

- RII30920 Certificate III in Civil Construction testamur.
- A Statement of Attainment will be issued for partial completion of the course.
- Certificate will be issued under MTACS RTO (52053).

Course Fees:

- Students who are not eligible for WA funded student tuition fees:
- \$7,500 (includes a non-refundable deposit of \$400). No additional prepayments are required.
- Payment plans are available.

Entry Requirements:

- Students must be 16 years or older at the time of enrolment
- Students must be Australian citizens, permanent residents, or have legal rights to study in Australia.
- Students must be physically fit and able to undertake manual handling tasks, work outdoors, carry items, mount and dismount earthmoving machines, and manoeuvre hand tools.

Assessment Methods:

The evidence gathering process will reflect specific requirements for units within the training package. Each student's attainment of the units of competency within this qualification is achieved by their successful completion of a range of assessment activities.

For each unit of Competency, these activities may include:

- Written tests including questioning and case studies
- Oral questions, and
- Submission of supplementary assessment evidence
- Practical demonstrations

Students are required to demonstrate that they can apply the knowledge and skills learnt in a range of situations and in varying contexts so many of the assessment requirements of the units of competencies will need to be demonstrated on more than one occasion.

Other Information:

- There are no classes scheduled during Public Holidays.*
- TAG offers bus service to and from Clarkson train station to the training site.

*The missed classes will be added to your training schedule to ensure the full 65 days duration is completed.

What You Need to Provide:

For practical activities, students will be required to wear enclosed shoes and clothing suitable for the weather, long sleeves, a high-visibility vest or shirt, long pants and safety boots.

Further Study Options:

Students who successfully complete RII30920 Certificate III in Civil Construction (General) may choose to continue their studies toward a higher-level qualification in civil construction.

WA Funded Student Tuition Fees:

Concession	\$397.44
Non-Concession	\$1,200 (fee capped - annual)
Youth (16-25 Years)	\$400 (fee capped - annual)

- The student tuition fees are indicative only and are subject to change given individual circumstances at enrolment. Additional fees may apply such as Student service and resource fees.
- All fees and charges for funded training are taken from the DTWD VET Fees and Charges Policy. Please refer to our website for more information.
- For Lower Fees, Local Skills eligible courses, annual fee cap limits apply of \$400 for concession eligible students and \$1,200 for non-concession eligible students. For full details about this program and any individual eligibility requirements, please go to <https://www.jobsandskills.wa.gov.au/skillsready>
- Payment plans are available via EziDebit. Additionally, students who feel they are experiencing financial hardship should seek further advice from a Training Department staff member.
- For RPL fees, please refer to the Fees and Charges Policy on our website.
- 2025 funding fees & places subject to DTWD approval.

WA Funding Eligibility Criteria:

- Candidates must have turned 16 years of age.
- Candidates must be unemployed or under employed and able to access mainstream training.
- Students must have a written referral from an Approved Participation Referral Agent for Job Seekers; or be referred by themselves; another agency or recruited.
- Candidates primary place of residence must be in Western Australia.
- Candidates must be an Australian citizen, permanent resident or holders of a sub-class 300, 309, 444, 445, 461, 785, 790, or 820 visa; • secondary holders of a temporary visa of sub-class 188, 457, 482, 489, 491 or 494 visa; • holders of a Bridging Visa E (subclasses 050 and 051) where the visa holder has made a valid application for a visa of subclass 785 or 790; • Ukraine citizens who are holders of a visa sub-class 449 or 786; • Afghan citizens who are holders of a visa sub-class 449; and • holders of a bridging visa who are eligible to work, and who have made a valid application for a subclass 866.
- Candidates under the age of 18 who are mandatory high school age must have an accompanying NOA or have an exemption.
- Proof of eligibility is required at the time of enrolment.
- Enrolling in this course may impact your eligibility for future funding with DTWD.